

[View email in browser](#)



**TRUST
MEMBER NEWS**

DECEMBER 2018

WHAT'S HAPPENING . . .

UPCOMING SHOWS AT THE PALACE



**Latshaw Pops
Spectacular
Christmas Show**
Fri, Dec 14



**Westmoreland
Symphony Orchestra
- Home for the
Holidays**
Sat, Dec 15



**The Night Ranger
Before Christmas
feat. Night Ranger**
Fri, Dec 21

[Click here for a complete Palace Schedule of Events](#)

MAJOR STOKES DONATES TO WCT



MAJOR STOKES, GREENSBURG'S NEWEST RESTAURANT, WILL BE DONATING 50% OF THEIR TIPS TO WESTMORELAND CULTURAL TRUST FOR THE MONTH OF DECEMBER.

Major Stokes offers fresh, fast and local food and believes high quality, locally sourced products prepared fresh daily and offered at an affordable price is a responsible alternative to large batch cooking of frozen foods. Major Stokes' goal is to give to a different charity each month, made possible by their dedication to pay employees a livable wage instead of needing to rely on tips.

Embark on a unique dining experience & give back to Westmoreland Cultural Trust!

Address: 108 West Pgh Street, Greensburg

Website: www.majorstokes.com

PARTY AT THE PALACE - SAVE THE DATE

Tickets on sale now!



The Trust's signature fundraising event invites corporate sponsors and community supporters to share in the evening's spotlight!

'Here's How We Roll'

Party at The Palace, held the last Saturday in February annually, features live music and entertainment. Guests receive 'All in' red-carpet treatment from the moment they arrive and throughout the end of the evening.

Complimentary hors d'oeuvres from top restaurateurs in the county, delectable desserts and over the top themed decor await each guest.

The Palace Theatre generates \$10.8 million dollars to the local economy. That's why we think it's important to continue our fundraising efforts to not only keep the historic theatre thriving for generations to enjoy, but also to celebrate its contribution to our community.

The Trust relies on corporate partners and event sponsors to share in the evening's spotlight. It's a great opportunity to feature your business, along with time to network with the county's top business and cultural leaders.

TICKETS

LOOKING BACK . . .

FASHION SHOW - IT'S A WRAP!



Read all about this year's 14th Annual Runway Fashion Show -
[Tribune Review Article](#)

[Photo Gallery](#)

"WIZARDS N'AT" AT GG&CC - OCT 10 - 31

Incubator Moira Richardson featured an eclectic array of pieces where she would incorporate glow-in-the-dark elements to nighttime skies, UFOs, and Wizards.

[Read the featured Tribune Review article online.](#)

You can find out more about Moira and her artwork at her website craftymoira.com

COMPREHENSIVE PLAN OPEN HOUSE HELD AT THE PALACE THEATRE NOV 1

On November 1st, a comprehensive plan for Westmoreland County was highlighted by Nichole Smalley at The Palace Theatre. Looking to increase population, jobs, and improve the overall

quality of life in Westmoreland County. "Reimagining Our Westmoreland", a blueprint for future growth in our County. For further detail, check out the article - <https://bit.ly/2DRmJef>

FRANKENSTEIN PRESENTED BY GREENSBURG CIVIC THEATRE

An adaptation of Mary Shelley's 'Frankenstein' was brought to life on-stage at Greensburg Garden & Civic Center October 18-20. The adaptation was vastly different from the Boris Karloff movie, according to the director. It told the story of Victor Frankenstein, a promising young doctor who, devastated by the death of his mother during childbirth, becomes obsessed with bringing the dead back to life.

It featured a remarkable cast, and turned out to be a great success!

LADIES NIGHT IN GREENSBURG

Westmoreland Cultural Trust was proud to participate in the inaugural Ladies Night in Greensburg event hosted by Greensburg Business and Professional Association November 14. The event featured a festive evening of food, friends, shopping, sales and a little bit of indulgence. The Palace Theatre was host to a Beauty Bar, vendors, raffle baskets, free caricatures, and the event registration.

ANGELS IN THE SNOW - CHRISTMAS CD RELEASE EVENT



TGIS performers Gary Pratt and Dawn Noelle released their first Christmas CD with a party at Greensburg Garden & Civic Center November 26 sponsored by Westmoreland Cultural Trust. Gary and Dawn performed songs from their album *Angels in the Snow* and welcomed special guests Stage Right Carolers and pianist Kathleen Kralik Dengler. Attendees were invited to meet Gary and Dawn following the performance and view the special art exhibit "Angel, Winter and Inspirational Art" featuring works from WCT incubator artists and other local artists.

GREENSBURG CIVIC THEATRE HOME FOR THE HOLIDAY'S GALA



Greensburg Civic Theatre held their Home for the Holiday's Gala at Greensburg Garden & Civic Center December 5. The local theatre company treated guests to live entertainment, hors d'oeuvres and a silent auction.

[Tribune Review article](#)

WESTMORELAND COUNTY CHAMBER OF COMMERCE HOLIDAY BASH



Westmoreland Cultural Trust was pleased to once again participate in the Westmoreland County Chamber of Commerce Holiday Bash held at the Ramada Inn December 5. More than 80 vendors come together to network and share in the joy of the season.

GREENSBURG LUMINARY NIGHT



Downtown Greensburg was filled with the sounds and sights of the holiday where luminaries guided visitors to stops at area businesses including The Palace Theatre S&T Bank Courtyard and WCT Incubator for the Arts space. Families participated in ornament making, letters to Santa, and a fun photo booth while sipping hot cocoa and listening to carols from Stage Right and WCT employee Lea Wesolowski.

[Facebook Photo Gallery](#)

OTHER NEWS . . .

NEW ART IN THE ALLEY PIECES



Stacey Pydynkowski



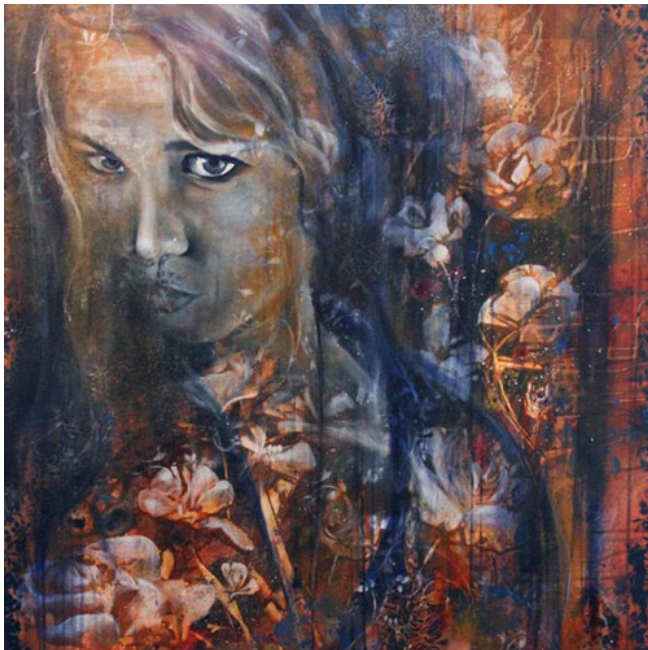
Patrick Mahoney

ARTISTS OF THE MONTH



STACEY PYDYNKOWSKI

We cling to moments of joy, hope, and triumph, while we tread the waters of sadness, anger, and fear. I paint the complicated, yet beautifully underrated marriage of these feelings: the creeping nostalgia that bites yet gives a warm hug: the knots forming in your stomach that come with the adrenaline rush propelling an uncharted ... [read more](#)



SARAH HUNTER

As a child, I was fascinated by the concept of the "Abstract and Concrete." During my grammar exercises, I would hastily do the "concrete" section so I could focus on the "abstract" portion of the lesson. ... [read more](#)

GET TO KNOW OUR VOLUNTEERS



TRUST AND THE PALACE THEATRE VOLUNTEER CONNIE RILEY

After her retirement from the Postal Service, Connie needed something to keep her active. She decided that getting involved in the community was the best solution. A friend of hers was an usher at The Palace and suggested that she join her in 1999 (19 years ago). She loved being able to see the amazing entertainment and socializing at the same time.

In 2004, she then expanded her need and volunteered at WCT's Party at The Palace. This was not her cup of tea. So in 2005, she moved on to the Fashion Show where she was in charge of the children and their fashions for the next three years. What a delightful experience!

In summer of 2006 and the inception of TGIS, she filled in for John Hermann as a cashier when he was not available. When John left TGIS, she took over as cashier with Adrienne O'Neill as her partner as needed.

In 2016 the attendance was increasing so another person was needed full time and her daughter, Vikki Zack, joined her with Audrey Cheek filling in. Another need filled - socializing with the attendees and assisting the Trust. She couldn't beat that!

Connie believes that volunteering is essential for a happy, healthy and productive life and will continue as long as she is able.

Thank you Connie for all of your hardwork and dedication!

SUPPORT THE TRUST

Invite a friend or relative to become a member of the Trust. A referral is the best compliment.

Contact Kelly Smith at 724-836-1123, x250 or ksmith@wctrust.net

Have a business and an interest in supporting our efforts in exchange for unique advertising opportunities?

Corporate Partners can contact Kelli Brisbane at 724-836-1123, x255 or kelli@wctrust.net

A SPECIAL THANKS TO OUR CORPORATE PARTNERS FOR MAKING A DIFFERENCE



**102 N. Main St, Suite 232
Greensburg, PA 15601
724-836-1123**

Westmoreland Cultural Trust is a 501(c)(3) nonprofit organization whose mission is to stimulate cultural and economic development in the Westmoreland County region. We promote the performing arts; we preserve and enhance our region's assets for the benefit of the community.

The Palace Theatre | Greensburg Garden & Civic Center | Stark/James Building | Union Trust Building

This email was sent from Jennifer Benford to jbenford@wctrust.net.

The Palace Theatre | 21 W. Otterman St, Greensburg, PA, 15601, United States

[Why am I receiving this email?](#)

[Click here to unsubscribe](#) | [Update your profile](#)